



Thomas Earle House, Kensington, London



£2,700,000

Set within one of Kensington's most desirable developments, this stunning three-bedroom residence on Warwick Lane offers an exceptional balance of space, style, and sophistication in the heart of London.

Spanning 1,904 sq ft, the apartment features a spacious open-plan reception room perfect for entertaining, complemented by a sleek modern kitchen and three generously sized bedrooms — each with its own luxuriously appointed bathroom. Floor-to-ceiling windows flood the interiors with natural light, creating a bright and inviting atmosphere.

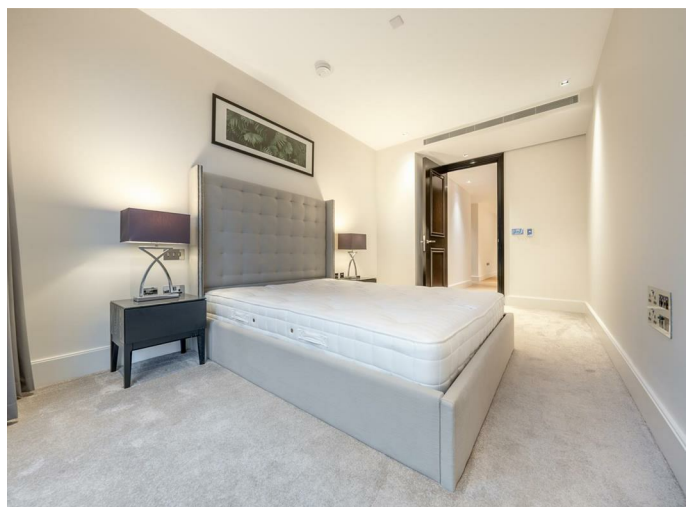
Residents enjoy access to outstanding on-site facilities, including a 24-hour concierge, swimming and vitality pools, spa treatment room, private cinema, fully equipped gym, and landscaped gardens with tranquil water features — all designed to deliver an unrivalled living experience.

Located just an 8-minute walk from Kensington (Olympia) Station, the property is ideally positioned for effortless access to London's world-class shopping, dining, and cultural attractions.

Completed in 2018, this remarkable home offers modern comfort, timeless design, and exclusive amenities — making it an ideal family residence, city base, or investment opportunity.

- 24-hour concierge
- Residents cinema room
- Residents swimming pool & sauna
- Residents spa & steam room
- Close proximity to shops & eateries
- Easy access to transport links
- Outdoor landscaped gardens
- Service Charge: £15,000 pa
- Ground Rent: £1000 pa
- Tenure: 997 years

**REQUEST A VIEWING**  
**+44 (0)20 3019 6150**



REQUEST A VIEWING  
+44 (0)20 3019 6150

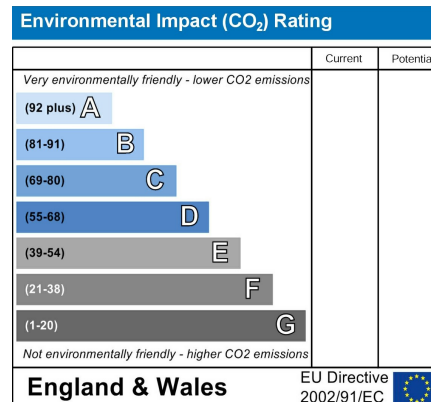
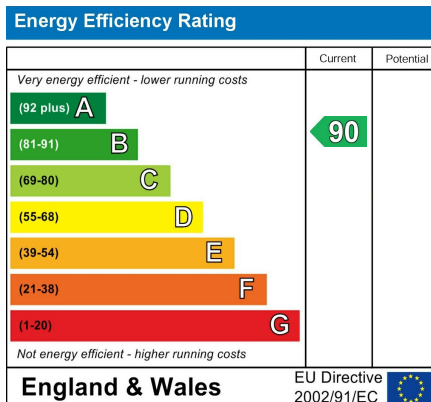


REQUEST A VIEWING  
+44 (0)20 3019 6150

# Thomas Earle House, Warwick lane, W14



APPROXIMATE GROSS INTERNAL FLOOR AREA 176.9 SQ M / 1904 SQ FT  
THIS FLOOR PLAN IS FOR ILLUSTRATIVE PURPOSES ONLY AND  
SHOULD BE USED FOR THIS PURPOSE BY PROSPECTIVE APPLICANTS AS ITS NOT TO SCALE.



GRANGE LONDON

Unit 10, Paddington Works, 8 Hermitage Street, Paddington, London, W2 1BE  
hello@grange.london +44(0)20 3019 6150